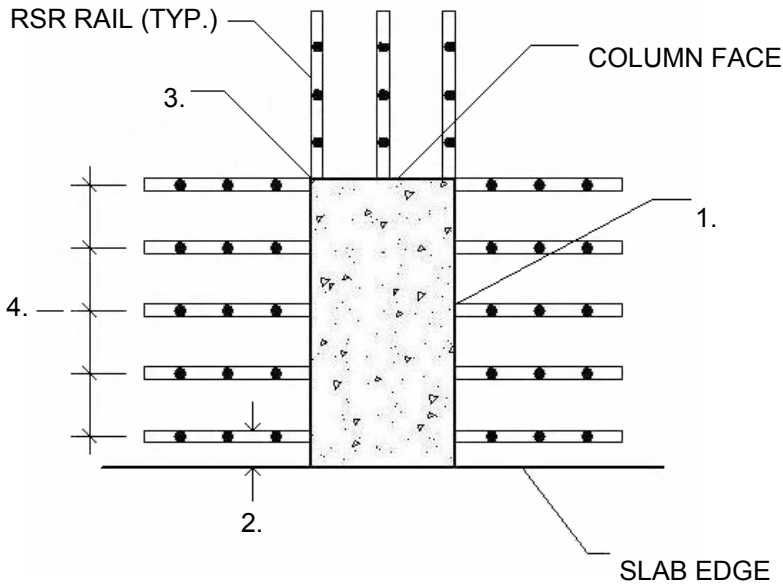


# INSTALLATION INSTRUCTIONS FOR RSR RAILS



1. RSR RAILS ENDS AT COLUMN FACE.
2. RSR RAIL ARE 2" MIN FROM EDGES AND OPENINGS.
3. RSR RAILS SHOULD BE PLACED AT COLUMN CORNERS UNO.
4. RSR RAILS EQUALLY SPACED ALONG COLUMN FACE.
5. RSR RAILS MUST BE VERTICAL.
6. NAIL CHAIRS TIGHTLY TO FORMS USING 4d-6d COMMON NAIL.

